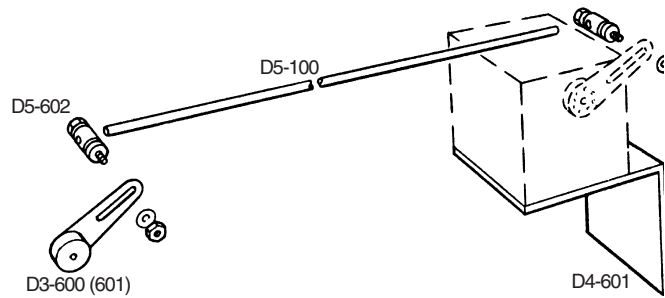


ACTUATOR LINKAGE

For Actuator Model DM, DM-1E, PL, R-AL, R-ALP & LTA

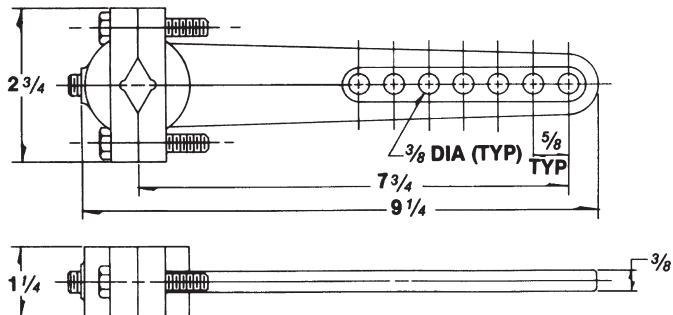
Linkage for Model DM Actuators Only:

- A-22 **Linkage kit** for mounting of actuator to top of duct or any flat surface, including:
 One 48" push rod (catalog number D5-100)
 Two ball joint connectors (catalog number D5-602)
 One damper lever arm for 1/2" shaft, (catalog number D3-601).
- A-22C **Linkage kit** for mounting of actuator to side of duct or wall, includes linkage kit A-22 and right angle mounting bracket (catalog number D4-601).
- D3-600 **Lever Arm:** One piece construction. Adjustable radius from 1-13/16" to 2 7/8".
- D3-601 **Lever Arm:** One piece construction. Adjustable radius from 1/4" to 4 1/2".
- D5-602 **Ball Joint Connectors:** One piece construction. Adjustable radius from 1-13/16" to 2 7/8"
- D5-100 **Push Rod:** 5/16" Dia. X 48" long plated steel shaft.
- D4-601 **Mounting Bracket:** Right angle mounting bracket with 7-3/4" D x 5" W mounting area.



A22-C Set

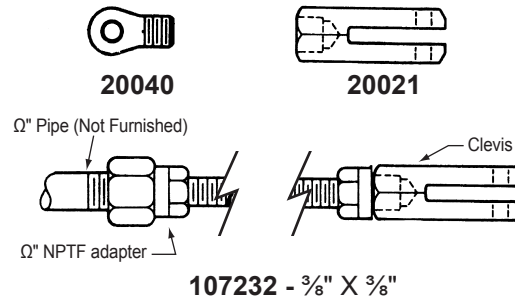
- D3-600 **Lever Arm:** One piece construction. Adjustable radius from 1-13/16" to 2 7/8".
- D3-601 **Lever Arm:** One piece construction. Adjustable radius from 1/4" to 4 1/2".
- D5-602 **Ball Joint Connectors:** One piece construction. Adjustable radius from 1-13/16" to 2 7/8"



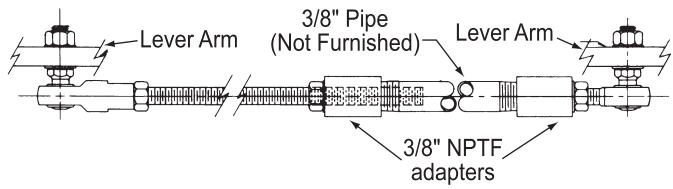
20054

Linkage for Model PL, R-AL, & R-ALP Actuators:

- 20054 **Lever Arm:** Heavy duty two piece cast iron assembly, seven 3/8" holes, adjustable from 1/2" to 1 1/4" shaft.
- 20040 **Actuator Eye (ram eye):** Included with PL, R-AL & R-ALP actuators. Used to attach actuator ram to clevis assembly catalog number 20021.
- 20021 **Clevis Assembly (adapter):** Aluminum, 3/8" clevis pin, for 1/2" standard pipe thread.
- 107232 **Adjustable Extension Drive Rod & Clevis Assembly:** Drive rod length is 1" to 6" adjustable, has a 1/2" NPTF adapter and 20021 clevis assembly.
- 107334 **Adjustable Extension Drive Rod & Ball Joint Assembly:** Drive rod length is 1" to 6" adjustable, has two 3/8" NPTF adapters and two rugged 0.719" diameter, self cleaning, permanently lubricated ball joints.



107232 - 3/8" X 3/8"



107334

Specifications subject to change without notice.